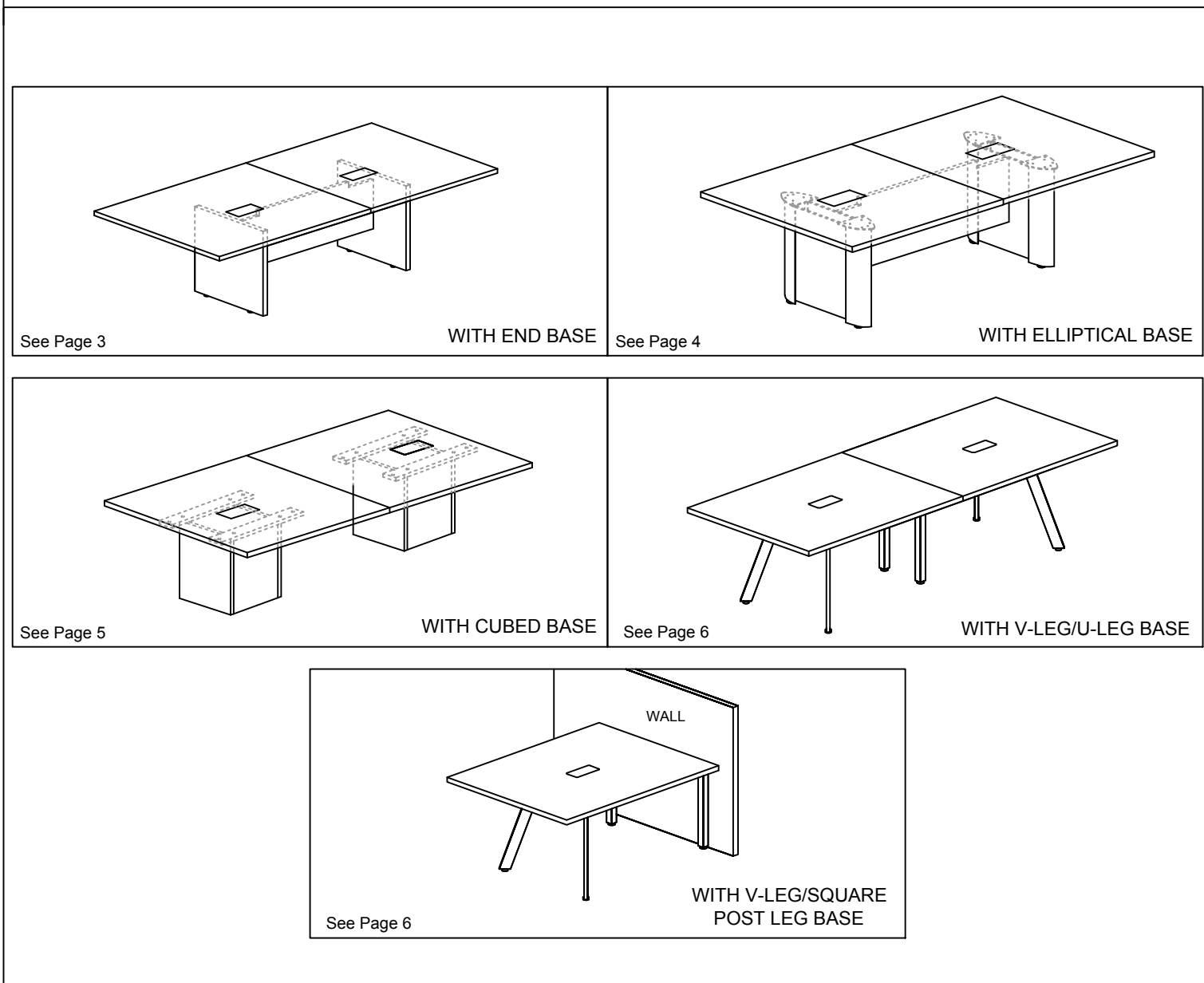


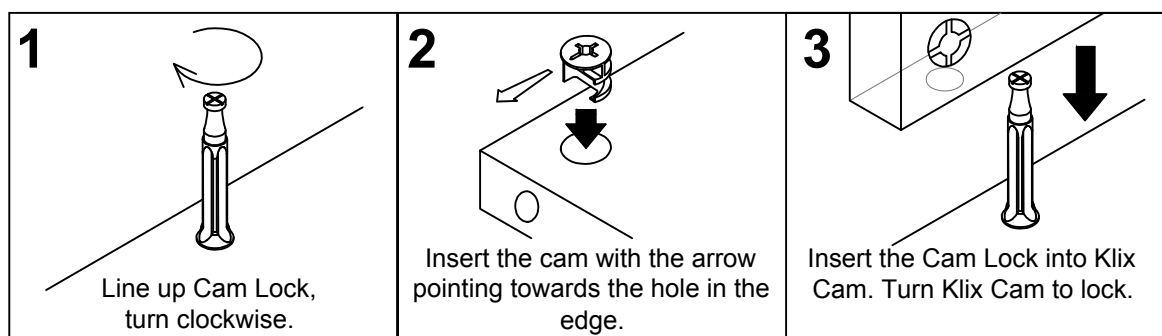
# ASSEMBLY INSTRUCTIONS MODEL: PL 438T HALF

Before assembly, please remove all parts from carton, verifying that you have the correct quantities, and read all the instructions.

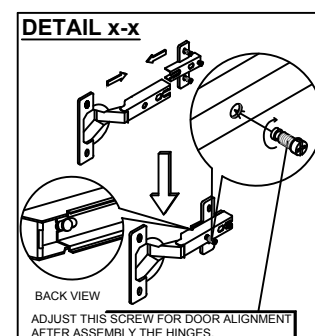
## CONFIGURATION:



## KLIX CAM INSTRUCTIONS



## HINGES INSTRUCTIONS

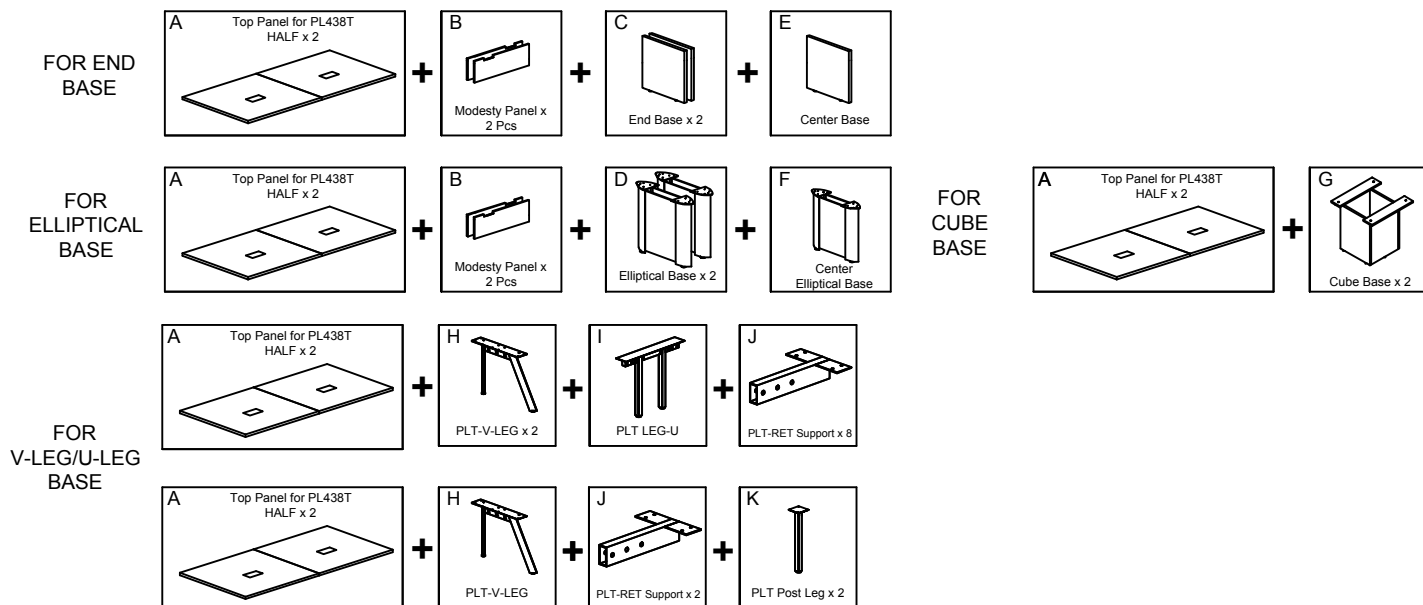


# ASSEMBLY INSTRUCTIONS MODEL: PL 438T HALF

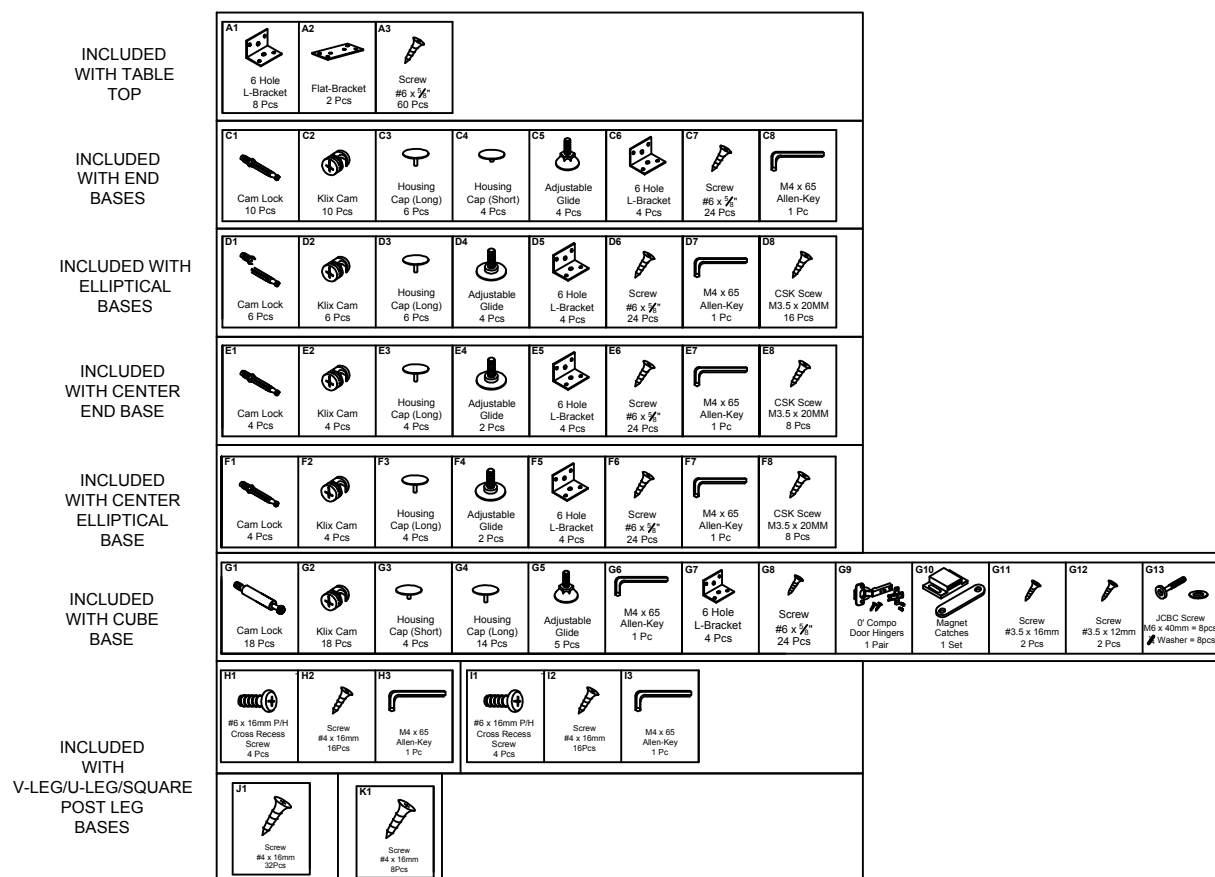


**PERFORMANCE**  
FURNISHINGS

## COMPONENTS:



## HARDWARE:

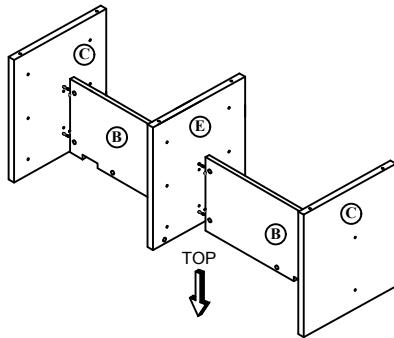


**Place all wooden parts on a clean, smooth surface to prevent them from being scratched.**

**Check to be sure that you have all parts and hardware. Remove all wrapping materials, including staples and packing straps before you start to assemble. Do not tighten all screws/bolts until all completely assembled. Keep all hardware parts out of reach of children. If any parts are missing, broken, damaged or worn, stop use of product until repairs have been made using factory authorized parts. Failure to follow these warnings may result in injury.**

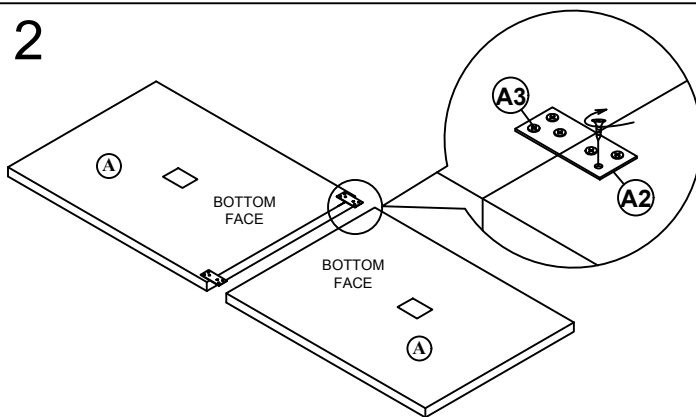
## INSTRUCTION: ASSEMBLING TABLE WITH END PANEL BASE

1



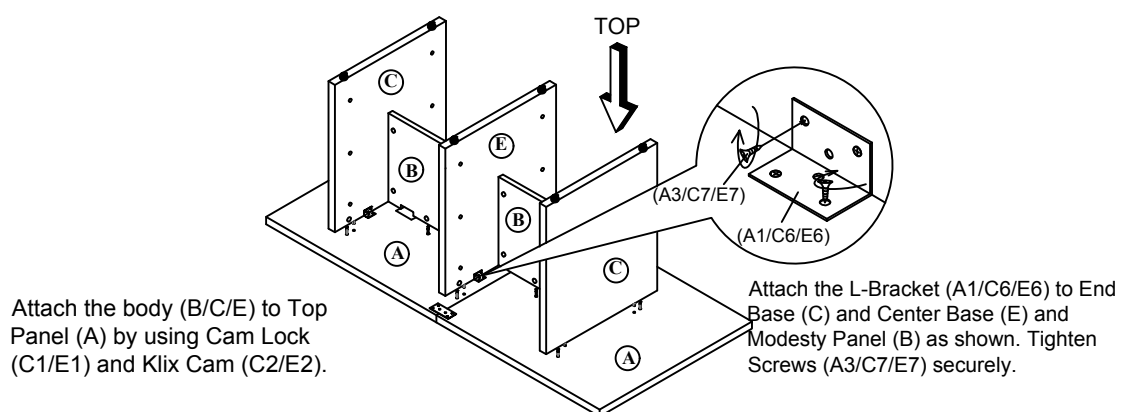
Attach the two End Base (C) and Center Base (E) to Modesty Panel (B) by using Cam Lock (C1) and Klix Cam (C2).

2



Attach the Flat-Bracket (A2) to two Top Panel (A) as shown. Tighten Screws (A3) securely.

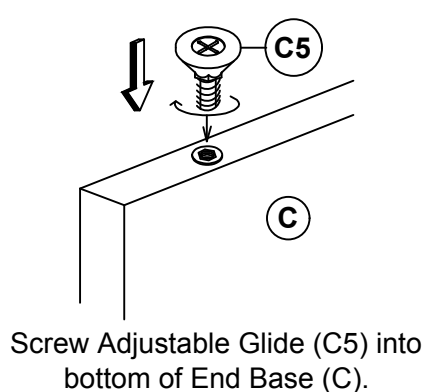
3



Attach the body (B/C/E) to Top Panel (A) by using Cam Lock (C1/E1) and Klix Cam (C2/E2).

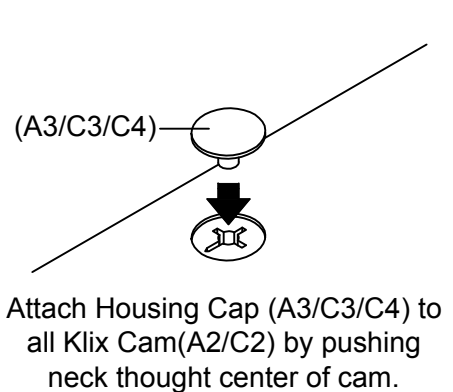
Attach the L-Bracket (A1/C6/E6) to End Base (C) and Center Base (E) and Modesty Panel (B) as shown. Tighten Screws (A3/C7/E7) securely.

4



Screw Adjustable Glide (C5) into bottom of End Base (C).

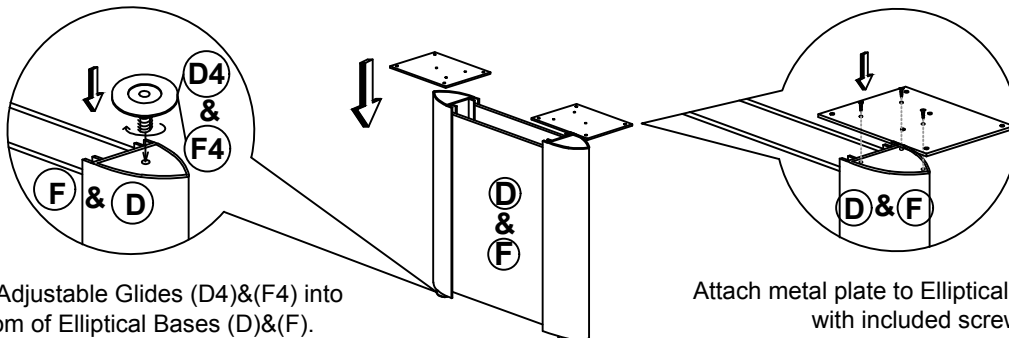
5



Attach Housing Cap (A3/C3/C4) to all Klix Cam (A2/C2) by pushing neck through center of cam.

## INSTRUCTION: ASSEMBLING TABLE WITH ELLIPTICAL BASE

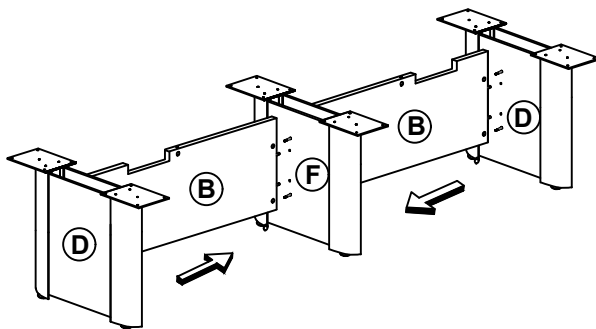
1



Screw Adjustable Glides (D4)&(F4) into bottom of Elliptical Bases (D)&(F).

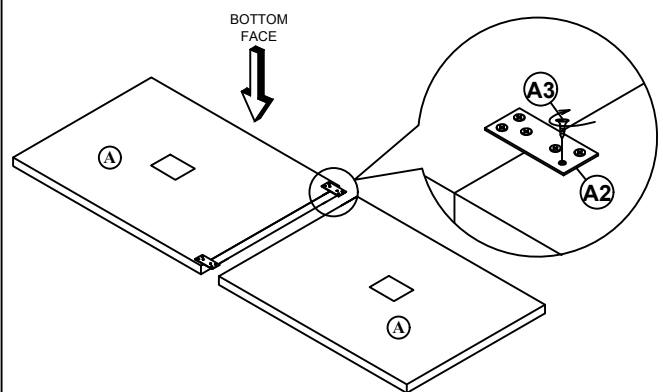
Attach metal plate to Elliptical Base (D)&(F) with included screws.

2



Attach Elliptical Base (D) and Center Elliptical Base (F) to Modesty Panel (B) by using Cam Lock (D1/F1) and Klix Cam (D2/F2).

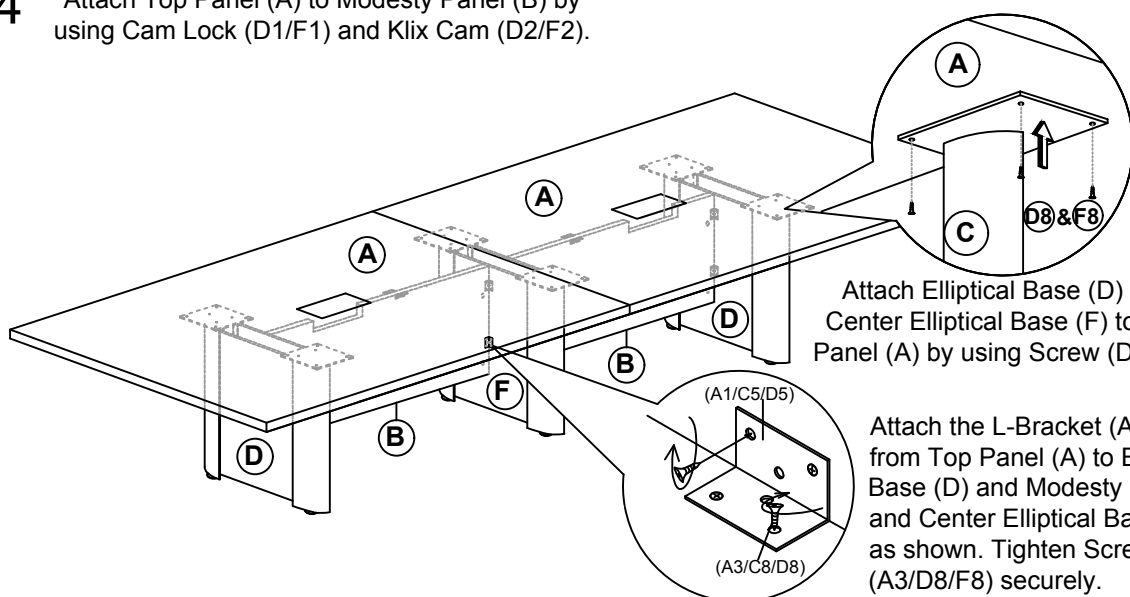
3



Attach the Flat-Bracket (A2) to two Top Panel (A) as shown. Tighten Screws (A3) securely.

4

Attach Top Panel (A) to Modesty Panel (B) by using Cam Lock (D1/F1) and Klix Cam (D2/F2).

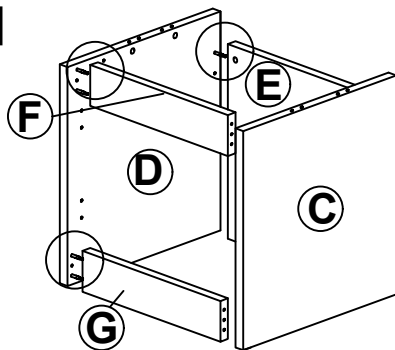


Attach Elliptical Base (D) and Center Elliptical Base (F) to Top Panel (A) by using Screw (D8/F8).

Attach the L-Bracket (A1/D5/F5) from Top Panel (A) to Elliptical Base (D) and Modesty Panel (B) and Center Elliptical Base (F) as shown. Tighten Screws (A3/D8/F8) securely.

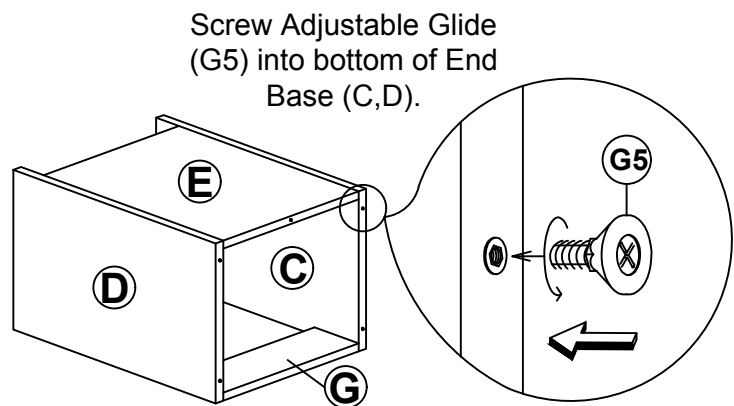
## INSTRUCTION:ASSEMBLING TABLE WITH CUBED BASE

1



Assemble Cube Base by attaching Side Panels(C)&(D) to Back Panels(E), Top rail(F) & Bottom Rail(G) with Cam Lock (G1) and Klix Cam (G2).

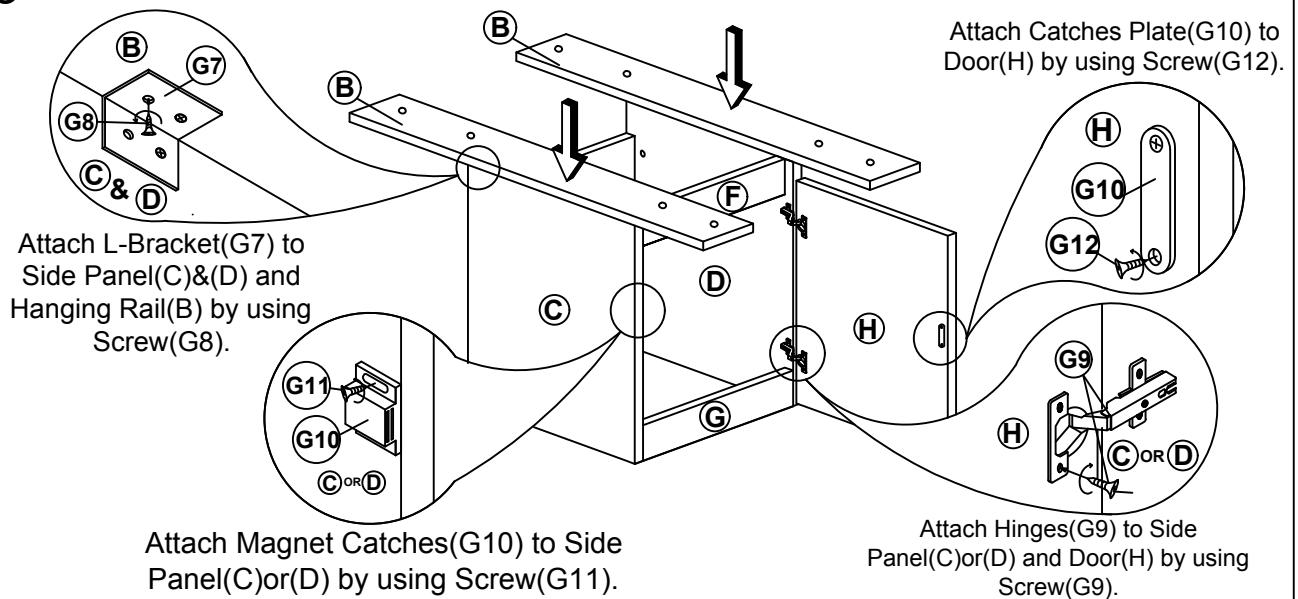
2



Screw Adjustable Glide (G5) into bottom of End Base (C,D).

3

Attach Cube Base Support (B) by using Cam Lock (D1) and Klix Cam (D2).



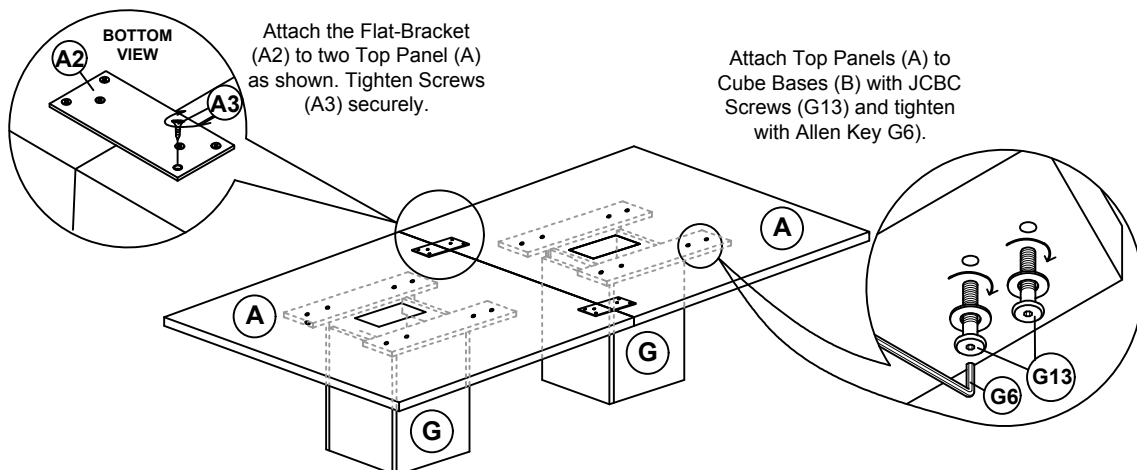
Attach L-Bracket(G7) to Side Panel(C)&(D) and Hanging Rail(B) by using Screw(G8).

Attach Catches Plate(G10) to Door(H) by using Screw(G12).

Attach Magnet Catches(G10) to Side Panel(C)or(D) by using Screw(G11).

Attach Hinges(G9) to Side Panel(C)or(D) and Door(H) by using Screw(G9).

4

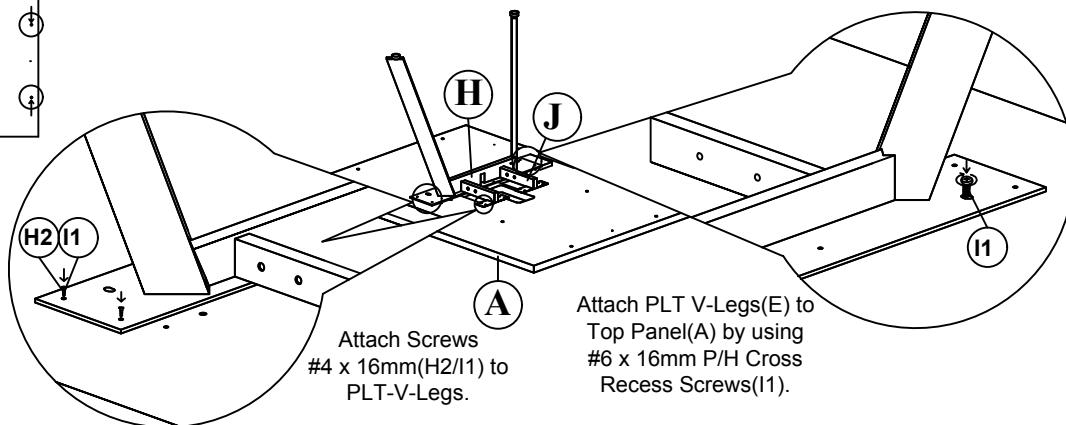
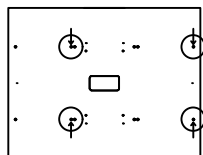


Attach the Flat-Bracket (A2) to two Top Panel (A) as shown. Tighten Screws (A3) securely.

Attach Top Panels (A) to Cube Bases (B) with JCBC Screws (G13) and tighten with Allen Key (G6).

## INSTRUCTION:ASSEMBLING TABLE WITH V-LEG BASE

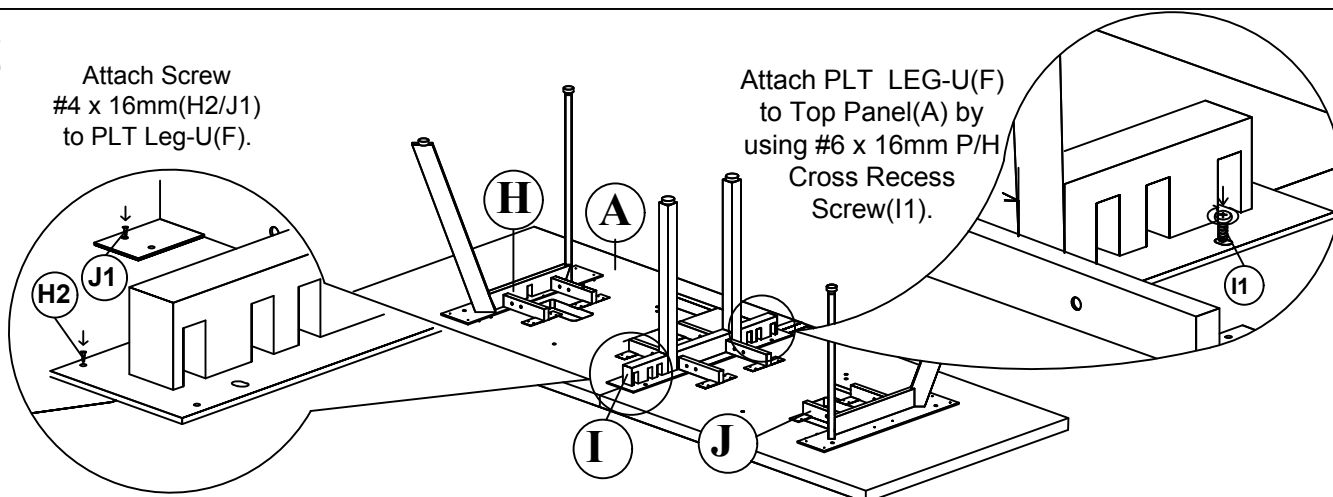
1



2

Attach Screw #4 x 16mm(H2/J1) to PLT Leg-U(F).

Attach PLT LEG-U(F) to Top Panel(A) by using #6 x 16mm P/H Cross Recess Screw(I1).



3

Attach PLT V-Legs(E) to Top Panel(A) by using #6 x 16mm P/H Cross Recess Screws(I1).

Attach Screws #4 x 16mm(H1/I2) to PLT-V-Legs.

Attach PLT Square Post Legs(H) to Top Panel(A) by using screws #4 x 16mm(K1)

